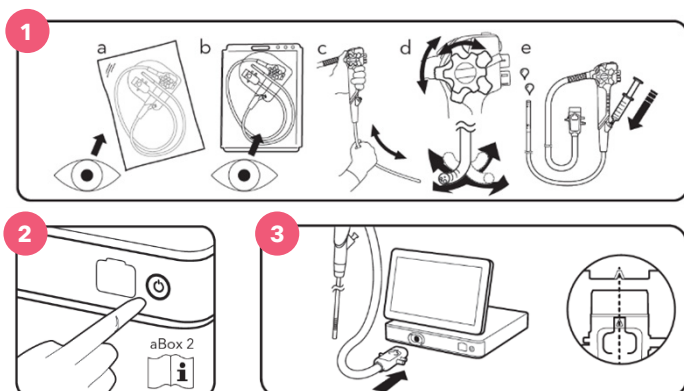




QUICK REFERENCE GUIDE

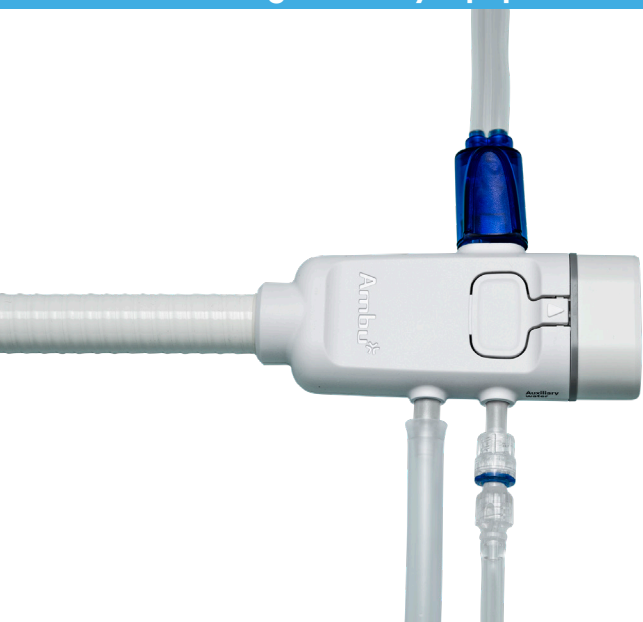
Ambu® aScope™ Gastro

1. Set Up



1. Opening the aScope Gastro
 - a. Visually inspect the integrity of the peel pack
 - b. Ensure there are no damaged components
 - c. Ensure that the insertion cord is straight and free of kinks
 - d. Instill 50ml of sterile water or saline down the working channel
2. Turn on the aBox 2 display and processing unit
3. Connect the aScope Gastro to the aBox™ 2. Ensure you feel a 'click' and an image appears on the monitor

2. Connecting Ancillary Equipment



1. The aScope Gastro is compatible with standard endoscopic CO₂ insufflators and fluid management systems
2. After connecting suction, insufflation, and irrigation tubing to aScope Gastro, ensure that all components are functioning properly before beginning the procedure
3. For troubleshooting, please refer to the aScope Gastro or aBox 2 Instructions for Use

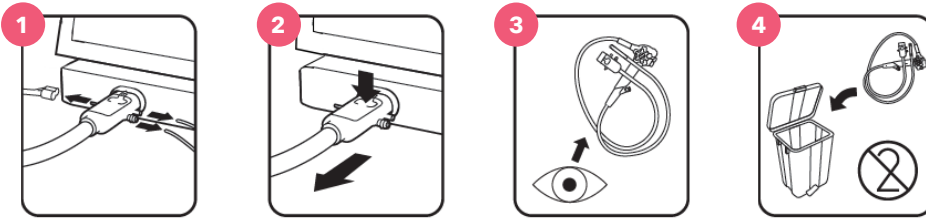


aScope Gastro IFU



aBox 2 IFU

3. Discarding the aScope Gastro



1. Clamp-off, then disconnect the insufflation, irrigation, and suction tubing from the connector of the aScope Gastro
2. Press the release button on top of aScope Gastro connector and pull scope out of the connection socket
3. Visually inspect the aScope Gastro to ensure there is no damage prior to discarding
4. Discard the aScope Gastro in ordinance with your hospital's policy

Note that the aScope Gastro is a single-use endoscope and must be discarded after use

3. aScope Gastro Specifications and Ordering Information

PRODUCT SPECIFICATIONS

aScope Gastro Insertion Tube

Distal tip outer diameter	9.9 mm
Working channel inner diameter	2.8 mm
Working length	1030 mm

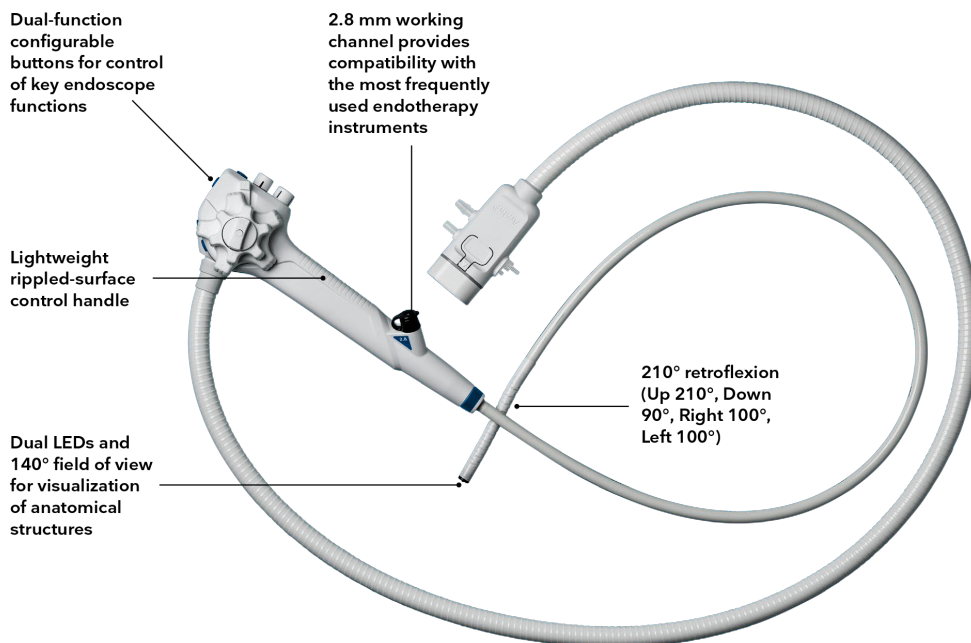
aScope Gastro Endoscope Channels

Working channel inner diameter	2.8 mm
Auxillary water jet channel	Yes

ORDERING INFORMATION

Item No.	Description	Units/Box
483001000US	aScope Gastro	6

4. Additional Resources



Scan QR Code for
aScope Gastro
YouTube Tutorials



Ambu, Inc.
6721 Columbia Gateway Drive
Suite 200
Columbia, MD 21046
Tel. 800 262 8462
Fax 800 262 8673
ambuUSA.com

Questions? Contact your Ambu representative
at **800-262-8462** or visit **ambuUSA.com**