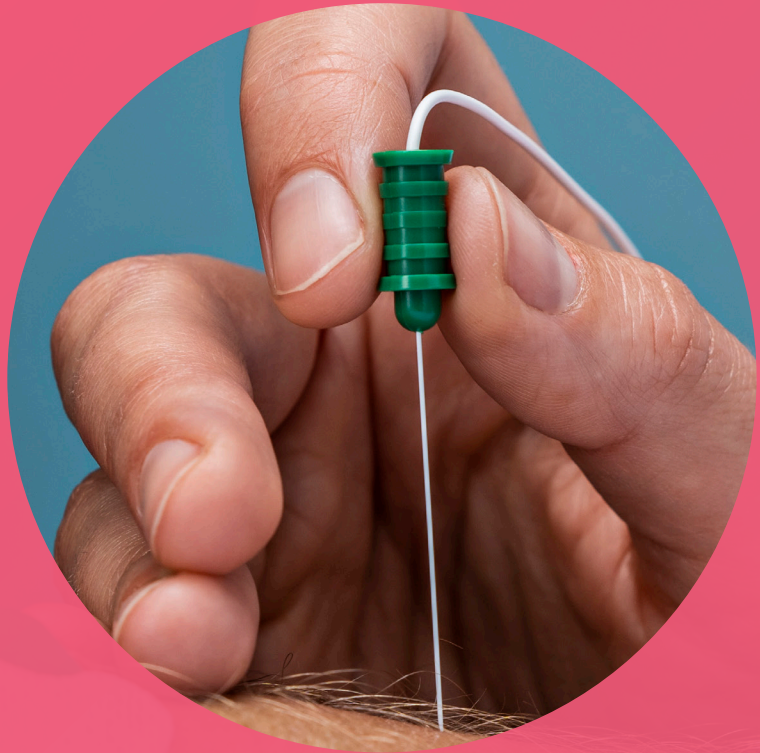


# EMG Needle Guide

Concentric, Inoject, Monopolar  
and Surface Electrodes

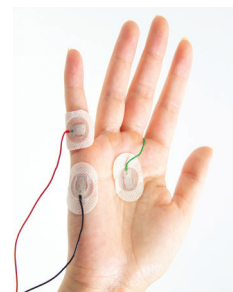
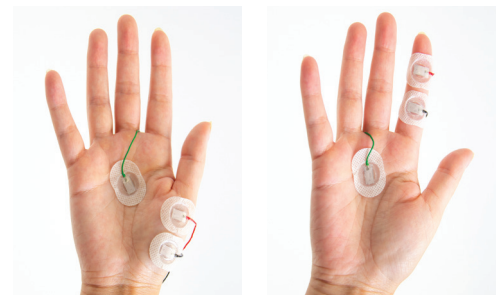


## AMBU® NEUROLINE™ 715 FOR ALL NERVE CONDUCTION STUDIES

Move through your NCS with ease using Ambu's best-selling Neuroline 715 surface electrodes.

- The unique design is flexible, fitting on both curved and flat surfaces.
- Solid gel is ideal for strong adhesion throughout the repositioning of electrodes.
- One set of electrodes works for the entire procedure, eliminating the need to clean products in-between.

[Learn More about Ambu Neuroline 715 electrodes.](#)



## THE AMBU® NEUROLINE™ CONCENTRIC EMG NEEDLE (740 SERIES)

The Concentric EMG needle features a precision-centered silver sensor which creates a well-defined recording area. The stainless-steel cannula acts as a reference electrode, requiring the use of only one surface electrode. The accompanying shielded cable has an orientation-free connection for ease of use and is a 5 pin DIN connector that fits most EMG systems.

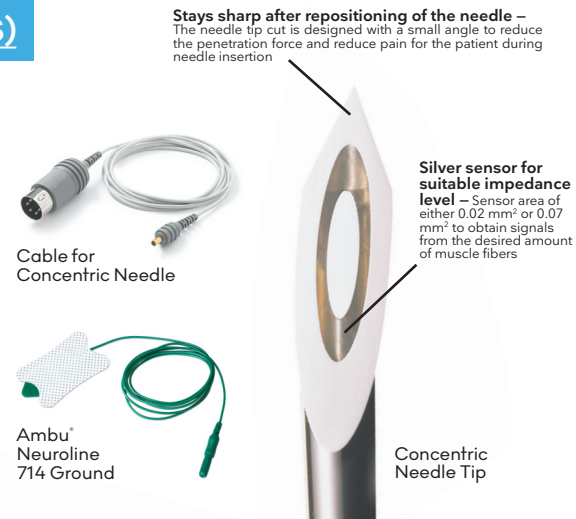
### Features and Benefits

- Ultra-sharp tip eases insertion and causes less pain
- Obtains and transfers signals reliably during EMG procedures
- Silicone coating reduces friction when inserting and moving the needle in the target area

### Recommended Surface Electrodes

- A pre-wired electrode: the Ambu® Neuroline™ 714 Ground Electrode (pre-wired, two options available in a 40" length or 60" length)

Note: Ambu also offers a Concentric cable with a 40" or 80" lead wires (Item 1741 or 1742)



## THE AMBU® NEUROLINE™ INOJECT NEEDLES (744 SERIES)

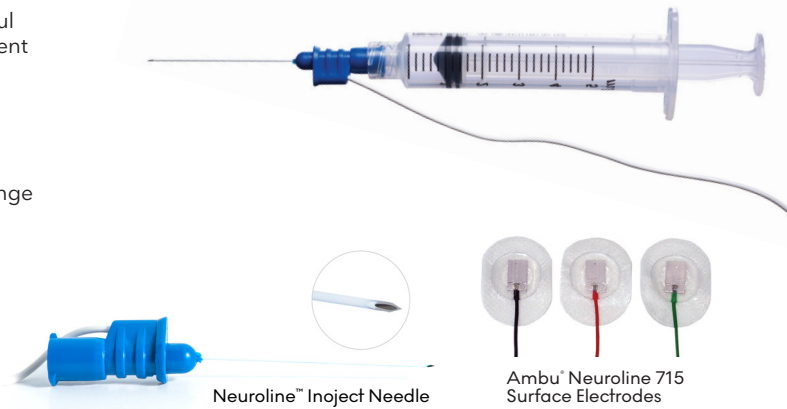
The Inoject needles combine the functions of EMG recording and Botulinum Toxin injection in one needle insertion. The Inoject's needle is particularly useful for procedures that involve delivery of therapeutic injections for the management of many neurological disorders.

### Features and Benefits

- The needle hub is compatible with Luer-Lock fitting which provides secure connection to a syringe
- Off-set pre-attached lead wire is designed to avoid interference with the syringe
- Ultra-sharp point for easy skin penetration

### Recommended Surface Electrodes

- Ambu® Neuroline™ 715 Surface Electrodes (pre-wired, four options available ranging in length from 20" to 79")
- 0415M – a solid gel, tab electrode for short term application (1 option, not pre-wired)



## THE AMBU® NEUROLINE™ MONOPOLAR EMG NEEDLE (742\* AND 743 SERIES)

The Monopolar EMG needle electrodes are designed to have a larger recording area and have been proven to reduce friction upon insertion. Use of a monopolar needle requires the application of two surface electrodes during examination and is available with or without pre-attached lead wires.

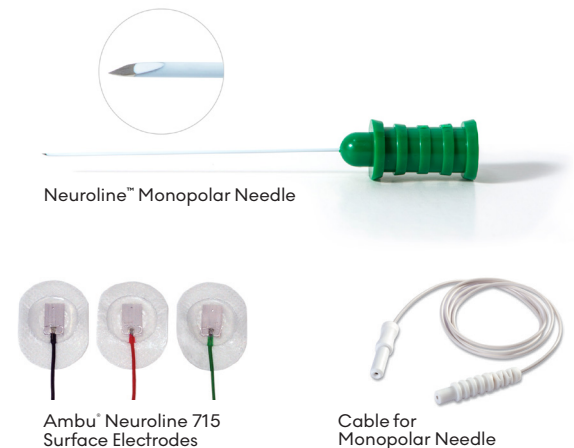
### Features and Benefits

- The needle tip is made with a lancet cut and a back bevel cut to reduce the penetration force
- Its single-use application minimizes the risk of exposing patients to cross-contamination

### Recommended Surface Electrodes

- Ambu® Neuroline™ 715 Surface Electrodes (pre-wired, four options available ranging in length from 20" to 79")

Note: Ambu also offers a Neuroline Monopolar cable with a (30") lead wire (Item 1744)



**Ambu** FOREVER FORWARD

Ambu, Inc.  
6721 Columbia Gateway Drive  
Suite 200  
Columbia, MD 21046  
Tel. 800 262 8462  
Fax 800 262 8673  
ambuUSA.com

US Rx only

PUB - 001656 - V01 - 09/2023 - Ambu USA. Technical data may be modified without further notice.

Questions? Contact your Ambu representative at 800-262-8462 or visit [ambuUSA.com](http://ambuUSA.com)