

# Ambu® aView™ 2 Advance Spare Part Kits

## BROCHURE

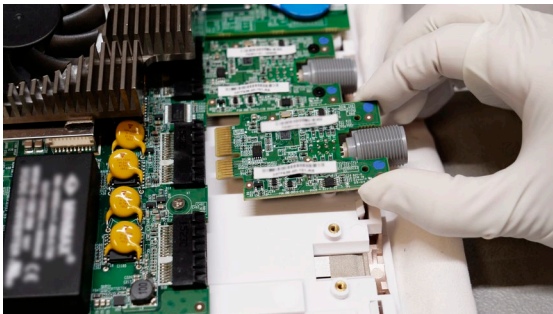
To extend the lifetime of your Ambu® aView™ 2 Advance monitor, Ambu has made a range of spare-part kits available to your hospital. The kits come with a comprehensive manual, which provides step-by-step illustrations that guide your biomedical engineers through the process of replacing parts as needed. In this way, you can ensure that the monitor is ready for procedures - without driving up hospitals' costs.



Battery kit



Fan kit



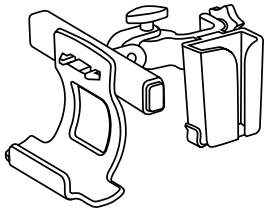
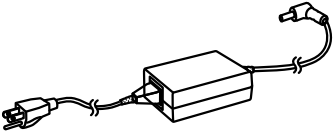
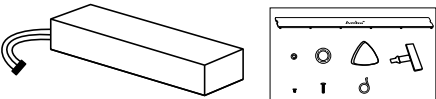
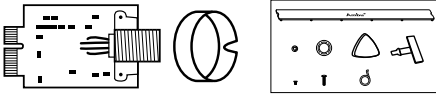
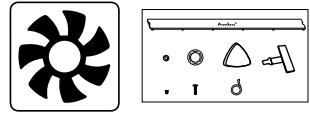
VDI kit



# Ambu

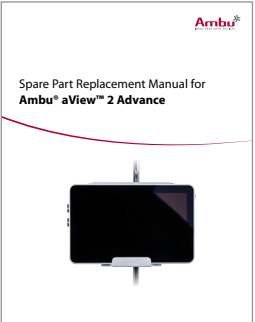
## ORDERING INFORMATION

Spare part kits for Ambu aView 2 Advance (Item number 405011000).

Spare part	Description	Item number:
	Ambu® aView™ 2 Advance - Bracket.	405013100
	Ambu® aView™ 2 Advance - Power supply kits: <ul style="list-style-type: none"> <li>• I (Australia)</li> <li>• B (US, Japan)</li> <li>• E / F / J (EU and Switzerland. Not for DK, UK)</li> <li>• G (UK)</li> <li>• K (Denmark)</li> </ul>	405015100 405015200 405015300 405015400 405015500
	Ambu® aView™ 2 Advance - Battery kit.	405012100
	Ambu® aView™ 2 Advance - Visualization device interface (VDI) kit - blue.	405014100
	Ambu® aView™ 2 Advance - Fan kit.	405016100

The listed spare parts may not be available in all countries. Please contact your local Ambu representative.

## DOCUMENTATION

Documentation	Description	Item number:
	Spare part replacement manual for Ambu® aView™ 2 Advance.	495405500 (Digital format only)

# Ambu

 Ambu A/S  
 Baltorpbakken 13  
 2750 Ballerup  
 Denmark  
 T +45 72 25 20 00  
 ambu.com